

Data Sheet

MaxRO

Maximized Performance for the Most Challenging Applications



Brackish Water Reverse Osmosis (RO) Membranes LG MaxRO R

Highest rejection BWRO membrane integrated with an innovative 36 mil ultra-low dP (ULD) feed spacer technology

Overview

MaxRO is a suite of membrane products engineered with the quintessence of LG Chem's best RO membrane technologies and precision manufacturing techniques.

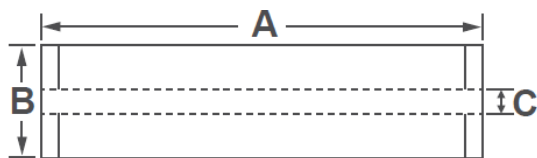
LG MaxRO R is the highest rejection BWRO membrane integrated with an innovative 36 mil ultra-low dP feed spacer designed to optimize the flow regime on the membrane surface. The results are superior water quality with significantly reduced differential pressure and membrane fouling potential.

LG MaxRO R is for the most challenging membrane applications, requiring high salt rejection, robust durability, and excellent fouling resistance. LG MaxRO R leads to a marked decrease in cleaning frequency and chemical usage, reducing your plant's overall operational costs. Maximize Plant Uptime with LG MaxRO R.

Product Specifications

Active Membrane Area, ft ² (m ²)	Permeate Flow Rate, GPD (m ³ /d)	Stabilized Salt Rejection, %	Minimum Salt Rejection, %	Feed Spacer, mil
400 (37)	11,500 (43.5)	99.8	99.5	36, Ultra low dP

Test Conditions : 2,000 ppm NaCl at 25°C (77°F), 225 psi (15.5 bar), pH 7, Recovery 15%.
Permeate flows for individual elements may vary +/-15%.



A mm (in.)	B mm (in.)	C mm (in.)	Weight, kg (lbs.)
1,016 (40)	200 (7.9)	28.6 (1.125)	16 (35)

All dimensional information is indicative and for reference purpose only. Please contact LG Chem for detailed technical specification.

Operating Specifications (For more information and operating guidelines, visit www.lgwatersolutions.com)

Max. Applied pressure	600 psi (41 bar)
Max. Chlorine concentration	< 0.1 ppm
Max. Operating temperature	45°C (113°F)
pH Range, Continuous (Cleaning)	2-11 (1-13)
Max. Feedwater turbidity	1.0 NTU
Max. Feedwater SDI (15 mins)	5.0
Max. Feed flow	75 gpm (17 m ³ /h)
Max. Pressure drop (ΔP) for each element	15 psi (1.0 bar)

The Membrane Elements performance is expressly conditioned on Buyer's storing, installing, operating, and maintaining Product in accordance with industry-accepted good practices and Seller's written instructions provided in the Seller's Technical Manual, which consists of LG Chem, Ltd [Technical Service Bulletins \("TSB"\)](#) and [Technical Applications Bulletins \("TAB"\)](#) and may be viewed and downloaded at www.lgwatersolutions.com.

The information and data contained herein are deemed to be accurate and reliable and are offered in good faith, but without guarantee of performance. LG Chem assumes no liability for results obtained or damages incurred through the application of the information contained herein. Customer is responsible for determining whether the products and information presented herein are appropriate for the customer's use and for ensuring that customer's workplace and disposal practices are in compliance with applicable laws and other governmental enactments. Specifications subject to change without notice. NanoH₂O is the Trademark of The LG Water Solutions or an affiliated company of LG Chem. All rights reserved. © LG Chem, Ltd.

Contact LG Water Solutions www.lgwatersolutions.com | waterinfo@lgchem.com

