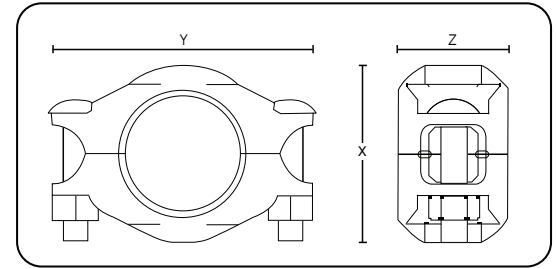


**Pressure Rating:  
300 psi (20 bar).**

- Housing - Painted ductile iron conform to ASTM A536, Gr. 65-45-12.  
Color: RAL3000.



- Gaskets - EPDM rubber suitable for hot and cold water service.  
*\*EPDM peroxide cured gaskets available upon request (for special applications such as chloramines, etc...)*

- Bolts / nuts - Heat-treated carbon manganese steel track bolts to ASTM A449-83a and A183 Gr. 2. Minimum tensile strength of 110,000 psi (758 MPa), zinc electroplated. Heavy hex nuts to ASTM A563.

**NOTE**  
For the use of Piedmont's couplings on cyclic axial displacement systems, please consult with Piedmont for design and installation guidance.



Style L Specifications					
Nominal size* (inch)	Dimensions inch (mm)			Approx. weight lb (kg)	Working pressure psi (bar)
	X	Y	Z		
1	2.28 (58.0)	3.86 (98.0)	1.77 (45.0)	0.93 (0.42)	300 (20)
1-1/4	2.68 (68.0)	4.17 (106.0)	1.77 (45.0)	1.17 (0.53)	300 (20)
1-1/2	2.87 (73.0)	4.41 (112.0)	1.77 (45.0)	1.21 (0.55)	300 (20)
2	3.39 (86.0)	5.04 (128.0)	1.77 (45.0)	1.50 (0.68)	300 (20)
2-1/2	3.78 (96.0)	5.43 (138.0)	1.77 (45.0)	1.85 (0.84)	300 (20)
3	4.41 (112.0)	6.22 (158.0)	1.77 (45.0)	2.09 (0.95)	300 (20)
4	5.63 (143.0)	7.56 (192.0)	1.97 (50.0)	3.17 (1.44)	300 (20)
5	6.65 (169.0)	8.78 (223.0)	1.97 (50.0)	4.39 (1.99)	300 (20)
6	7.87 (200.0)	9.92 (252.0)	1.97 (50.0)	5.07 (2.30)	300 (20)
8	10.00 (254.0)	12.68 (322.0)	2.28 (58.0)	8.38 (3.80)	300 (20)
10	12.36 (314.0)	15.28 (388.0)	2.44 (62.0)	14.6 (6.60)	300 (20)
12	14.37 (365.0)	17.44 (443.0)	2.44 (62.0)	18.85 (8.55)	300 (20)

\*14.0" to 24.0" also available upon request.