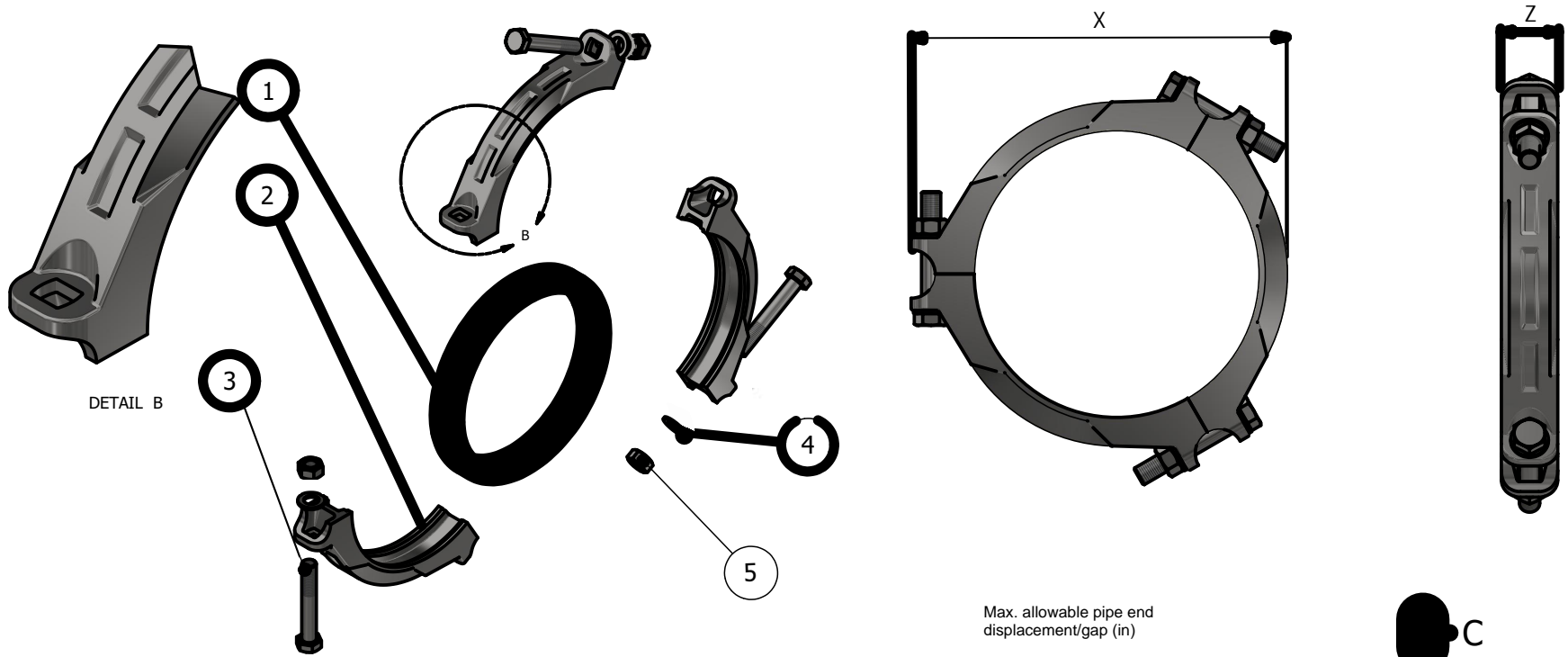


ITEM	DESCRIPTION	MATERIAL	QTY
1	GASKET	EPDM RUBBER	1
2	COUPLING HOUSING	DUPLEX 2205 CE8MN / SUPER DUPLEX CE8MN / CE3MN	3
3	HEAVY HEX NUT	DUPLEX 2205 / 316 STAINLESS STEEL	3
4	HEX HEAD, SQUARE NECK TRACK BOLT	DUPLEX 2205 / 316STAINLESS STEEL	3
5	WASHER	DUPLEX 2205 / 316STAINLESS STEEL	6

PRESSURE RATING:

NOMINAL SIZES	RATED PRESSURE	PROOF TEST PRESSURE
16" - 18"	1200 PSI (83 BAR)	1800 PSI (125 BAR)

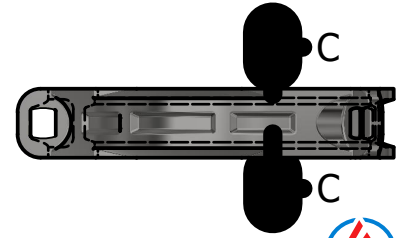


1. DIMENSIONS SHOWN IN THE DRAWING ARE INDICATIVE. FOR DETAILED INFORMATION ON GD&T, CONTACT PIEDMONT.
2. COUPLING IS PRESSURE RATED FOR SCH. 40 PIPE (OR THICKER) WITH CUT GROOVES ONLY ACC. TO AWWA C606.
3. HOUSING MATERIAL IS DUPLEX (CE8MN) OR SUPER DUPLEX (CE8MN/CE3MN) STEEL CONFORM TO ASTM A995/A995M-13.
4. BOLTS ARE HEX HEAD, SQUARE NECK TRACK BOLT, 2205 DUPLEX OR SS316.
5. NUTS ARE HEAVY HEX 2205 DUPLEX OR SS316 CONFORM TO DIN-934.
6. GASKETS ARE EPDM RUBBER (FLUSH-FIT/C-SHAPE)
7. WASHER ARE 2205 DUPLEX OR SS316 CONFORM TO DIN-125.
8. SINCE D 16 & D18 ARE A 3-PIECES COUPLING, THE MINOR SIZE D STYLE COUPLINGS TYPICAL DIMENSIONS R1, R2 AND RK ARE NOT RELEVANT HERE.
9. DUPLEX HARDWARE IS RECOMMENDED FOR HIGH PRESSURE SWRO CORROSIVE APPLICATIONS.

Max. allowable pipe end displacement/gap (in)



SECTION C-C



DIMENSIONS:

NOMINAL SIZE	PIPE OD	dk	X	Z	BOLTS QTY	BOLTS SIZE	APPROX. WT	MAX. ALLOWABLE PIPE END DISPLECEMENT / GAP
MM [INCH]	MM [INCH]	MM [INCH]	MM [INCH]	MM [INCH]			KG [LB]	INCH
DN400 [16"]	406.4 [16.00]	55.118 [2.17]	542.54 [21.36]	74.68 [2.94]	3	M27 * 170	28.97 [63.87]	0.294"
DN450 [18"]	457.2 [18.00]	58.268 [2.294]	610.36 [24.02]	78.94 [3.11]	3	M27 * 170	38.890 [85.73]	0.294"



ALL INFORMATION CONTAINED IN THIS DRAWING IS THE SOLE PROPERTY OF PIEDMONT PACIFIC. ANY REPRODUCTION IN PART OR AS A WHOLE WITHOUT THE WRITTEN PERMISSION OF PIEDMONT PACIFIC IS PROHIBITED.

REV	DATE	REVISION DESCRIPTION	DRAWN	CHECKED	IN CH	APPROV

UNLESS NOTED OTHERWISE
 DIMENSIONS ARE IN MILLIMETERS
 UNLESS OTHERWISE SPECIFIED
 DIMENSIONS ARE TO CENTER UNLESS OTHERWISE SPECIFIED
 DIMENSIONS ARE TO CENTER UNLESS OTHERWISE SPECIFIED
 DIMENSIONS ARE TO CENTER UNLESS OTHERWISE SPECIFIED
 DIMENSIONS ARE TO CENTER UNLESS OTHERWISE SPECIFIED
 DIMENSIONS ARE TO CENTER UNLESS OTHERWISE SPECIFIED
 DIMENSIONS ARE TO CENTER UNLESS OTHERWISE SPECIFIED

PIEDMONT PACIFIC
 GROOVE END FLEXIBLE PIPE COUPLING

TITLE	SCALE	UNIT	DRAWING NO.	SHEET	REVISION
STYLE D16 & D18 COUPLING ASSEMBLY	N/A	[INCH]	1.0	1.0	1



Headquarter: 54/18 Bui Quang La, Ward 12, Go Vap District, HCMC, Vietnam
 Office: 77 DHT10B, Dong Hung Thuan Ward, District 12, HCMC, Vietnam
 Phone: (028) 6258 5368 - (028) 6291 9568
 Email: info@atswatertechnology.com
 Website: www.atswatertechnology.com

